

BOCA POINTE NO. 3, TRACT Y-2 REPLAT NO. 1

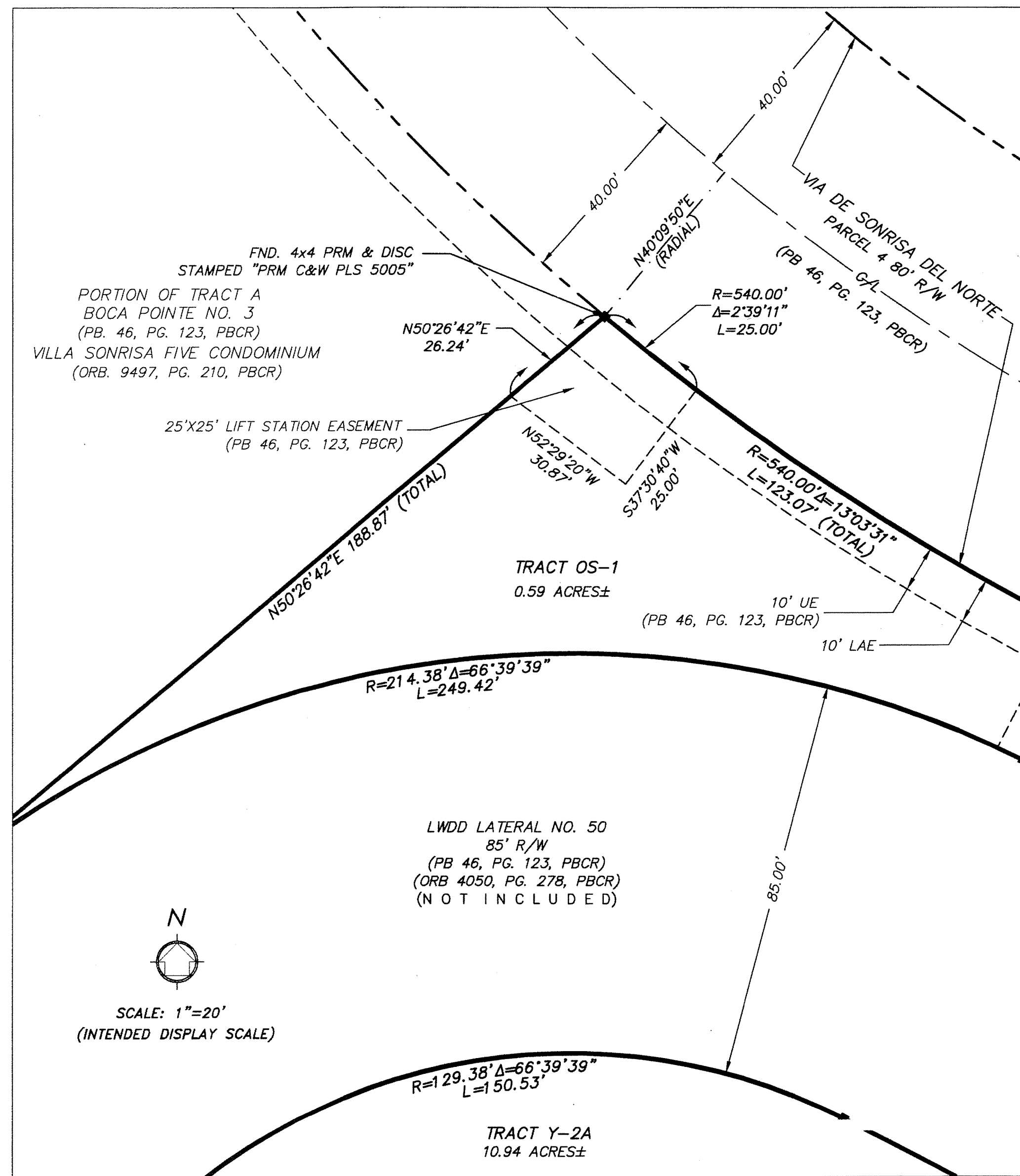
A PORTION OF BOCA POINTE PUD
BEING A REPLAT OF TRACT Y-2, BOCA POINTE NO. 3, ACCORDING TO THE PLAT THEREOF, AS RECORDED IN
PLAT BOOK 46, AT PAGE 123 THROUGH 125 INCLUSIVE, OF THE PUBLIC RECORDS OF PALM BEACH COUNTY, FLORIDA.
SAID LANDS LYING AND SITUATE IN SECTIONS 27 AND 34, TOWNSHIP 47 SOUTH, RANGE 42 EAST, PALM BEACH COUNTY, FLORIDA.

27

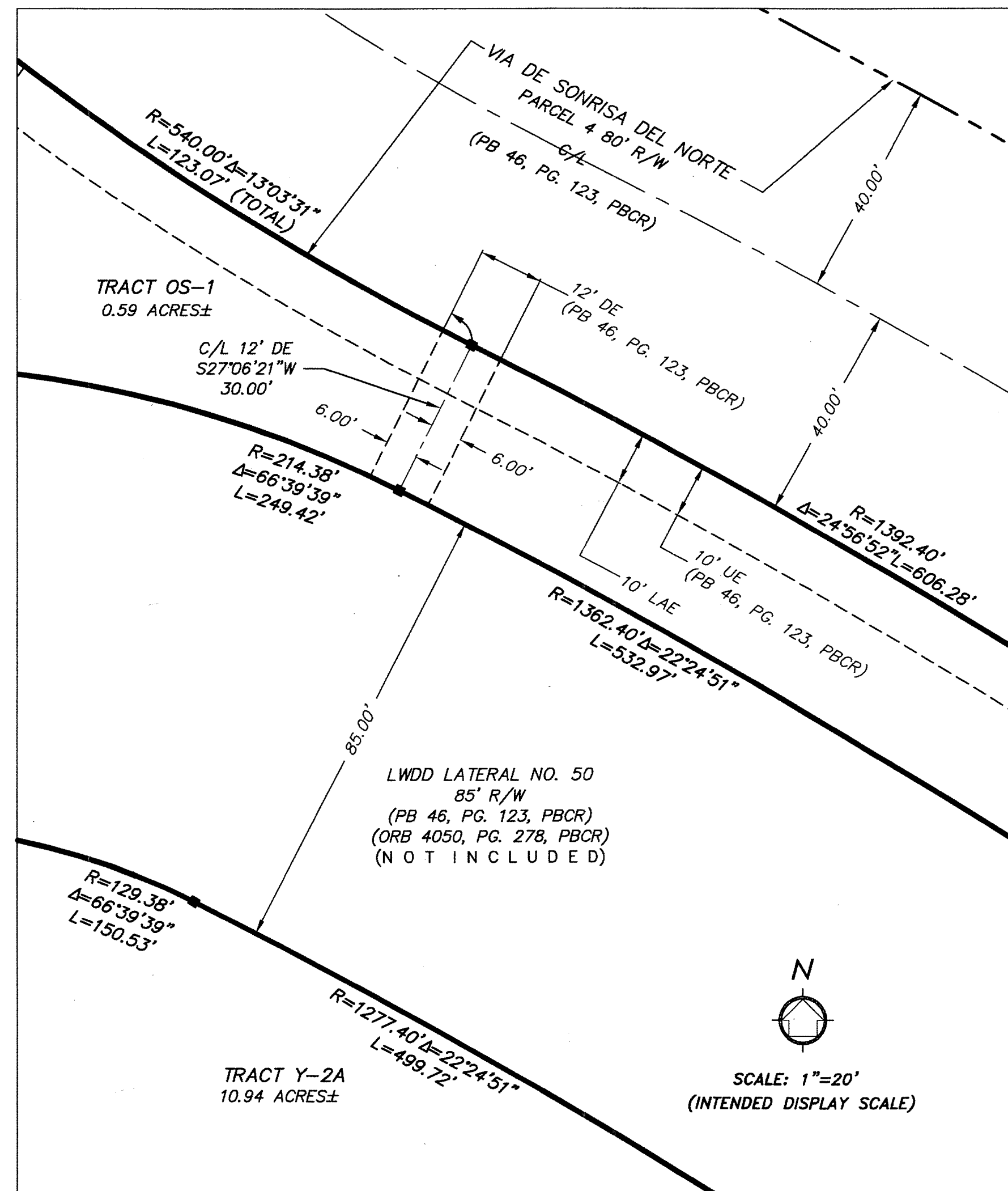
State of Florida }
County of Palm Beach } SS
THIS PLAT WAS FILED FOR
RECORD AT _____ M.
THIS _____ DAY OF _____
A.D. 2014 AND DULY RECORDED
IN PLAT BOOK _____ ON
PAGES _____ THROUGH _____
SHARON R. BOCK
CLERK AND COMPTROLLER
BY: _____
DEPUTY CLERK

SHEET 3 OF 3 SHEETS

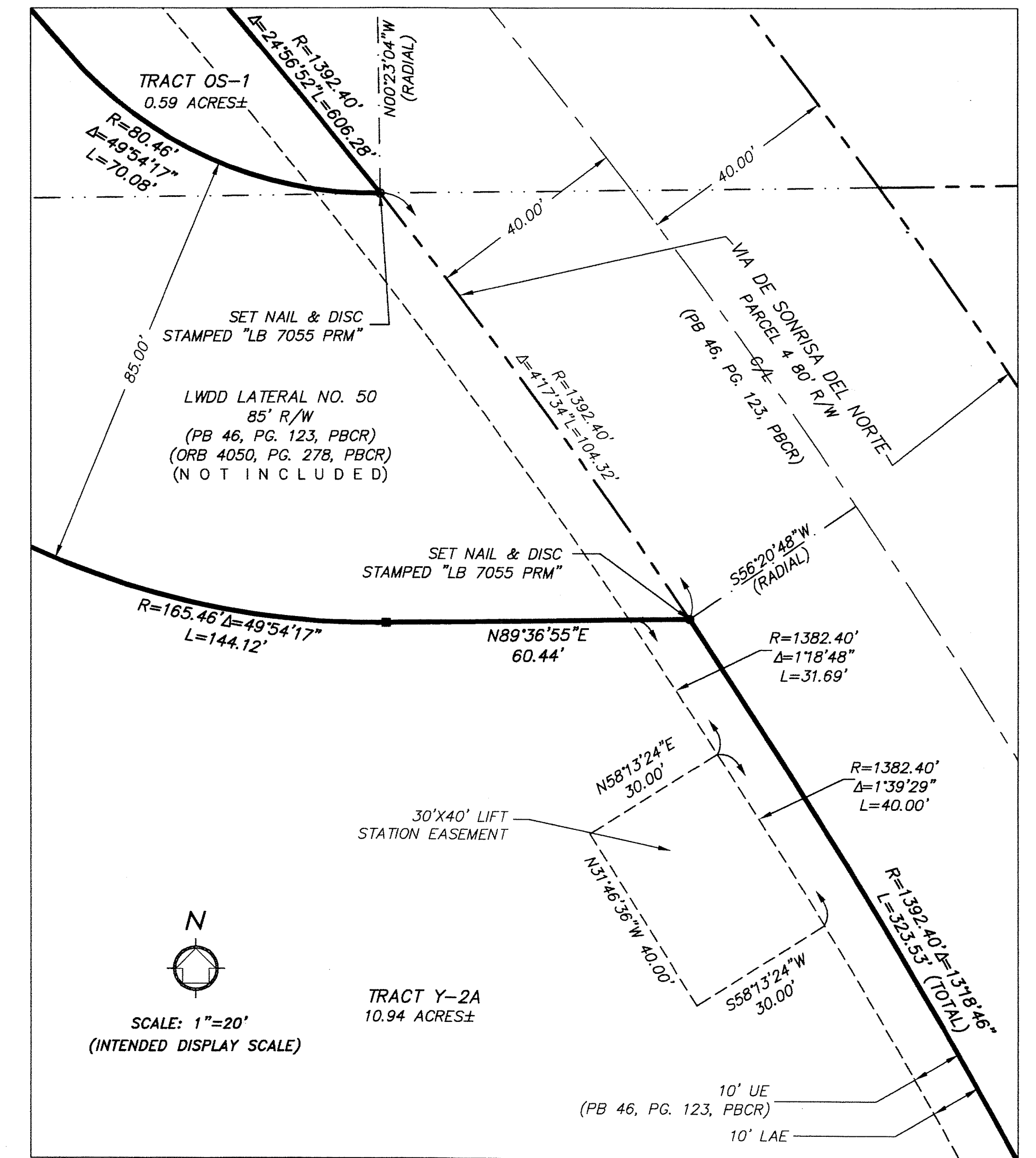
DETAIL "A"



DETAIL "B"



DETAIL "C"



LEGEND:

- C/A = CENTER LINE
- CONC. = CONCRETE
- CCR = CERTIFIED CORNER RECORD
- Δ = DELTA (CENTRAL ANGLE)
- DE = DRAINAGE EASEMENT
- FND. = FOUND
- LB = LICENSED BUSINESS
- L = LENGTH OF ARC
- LAE = LIMITED ACCESS EASEMENT
- LMAE = LAKE MAINTENANCE ACCESS EASEMENT
- LME = LAKE MAINTENANCE EASEMENT
- LWDD = LAKE WORTH DRAINAGE DISTRICT
- MON. = MONUMENT
- ORB = OFFICIAL RECORDS BOOK
- O/S = OFFSET
- PG. = PAGE
- PBCR = PALM BEACH COUNTY RECORDS
- PLS = PROFESSIONAL LAND SURVEYOR
- PRM = PERMANENT REFERENCE MONUMENT
- PB = PLAT BOOK
- R = RADIUS
- R/W = RIGHT-OF-WAY
- = SET 4"x4" CONC. PRM & ALUMINUM CAP STAMPED "LB 7055 PRM, EXCEPT AS NOTED.
- UE = UTILITY EASEMENT

NOTE:
THE 10' LIMITED ACCESS EASEMENT AND 30'x40' LIFT STATION EASEMENT (ORIGINALLY 25'x25') BEING REPLATED AND SHOWN HEREON WERE PREVIOUSLY CREATED BY BOCA POINTE NO. 3, PLAT BOOK 46, PAGE 123, PALM BEACH COUNTY RECORDS.